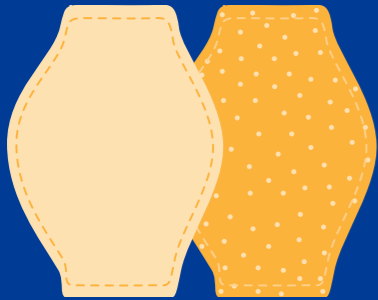
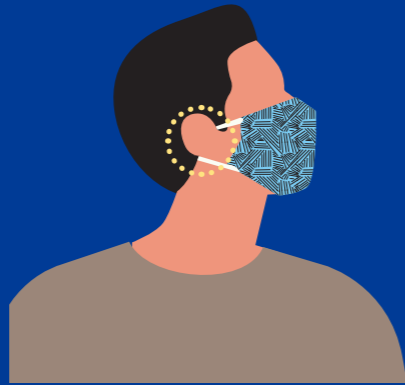


# A GOOD CLOTH MASK OR FACE COVERING SHOULD:

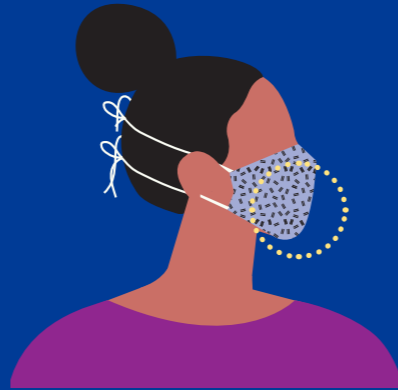
2+ layers



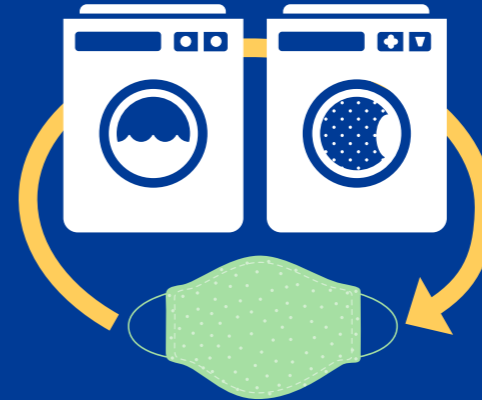
Be made of 2+ layers of woven fabric (e.g. cotton or linen)



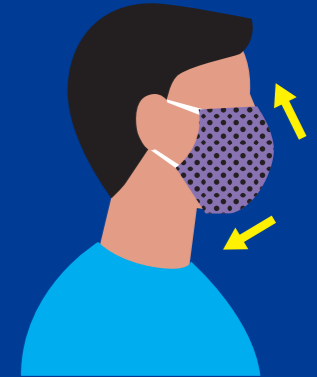
Fit tightly to the head with ties or ear loops



Be easy breathing, comfortable & not require adjusting



Maintain its shape after washing & drying



Be large enough to cover the nose & mouth without gaping